

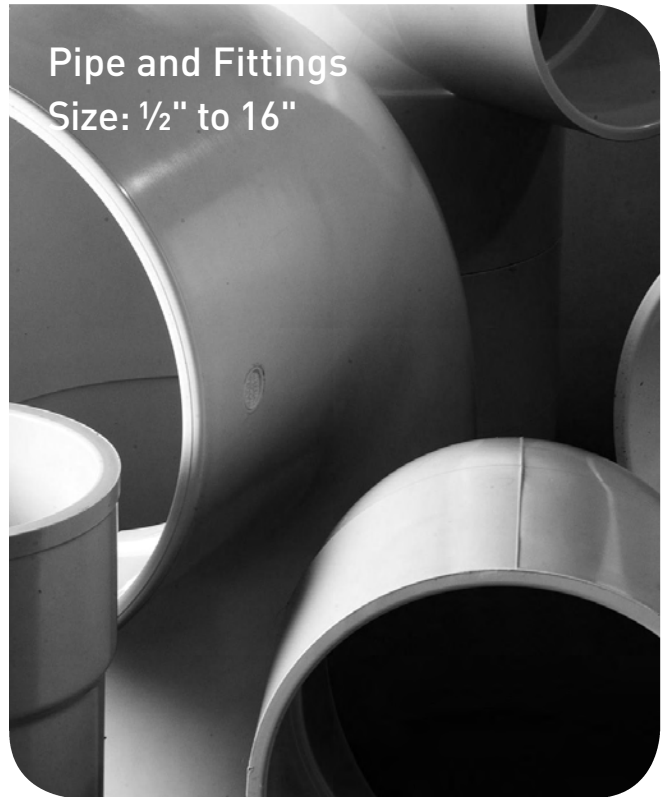
Section 3

**Schedule 40 PVC
Piping System**

Serviced by GF Little Rock

Effective July 1, 2008

Pipe and Fittings
Size: 1/2" to 16"



Glossary

FPT	=	Female Pipe Thread
MPT	=	Male Pipe Thread
S	=	Tapered Socket
SPG	=	Spigot End (same dimension as pipe outside diameter)
*	=	Non-Returnable / Non-cancellable
^	=	40% Restocking Fee
BUSH	=	Assembled Fitting from Molded Components
FAB	=	Fabricated Fitting

Product Line	Description	Discount
45	PVC Pressure Pipe - 20 ft. lengths Plain End	_____
47	PVC Pressure Pipe - 20 ft. lengths Bell End	_____
01	PVC Pressure Fittings - Molded	_____
02	PVC Pressure LD Fittings-Molded	_____
04	PVC Pressure LD Fittings-Fabricated	_____

The technical information given in this publication implies no warranty of any kind and is subject to change without notice. Please consult our Terms and Conditions of Sale.

Not for use with compressed air or gases.

DO NOT TEST with air or air over water.

GF Piping DOES NOT RECOMMEND the use of thermoplastic piping products for systems to transport or store compressed air or gases, or the testing of thermoplastic piping systems with compressed air or gases in above or below ground locations. The use of GF Piping products in compressed air or gas systems automatically voids the warranty for such products, and their use against our recommendation is entirely the responsibility and liability of the installer. GF Piping will not accept responsibility for damage or impairment from its products, or other consequential or incidental damages caused by misapplication, incorrect assembly, and/or exposure to harmful substances or conditions.

For more information about any of our product lines, please call (800) 423-2686.

Schedule 40 PVC

Page



Pressure Pipe

3.5



Pressure Fittings

3.6

Specifications and Standards

Specifications and Standards

NSF/ANSI Standard 14

NSF/ANSI Standard 61

ASTM D 1784 : Material PVC Type I, Grade I White (cell classification 12454-B)

ASTM D 1785 : PVC Schedule 40 Pipe

ASTM D 2466 : PVC Schedule 40 Socket and Threaded Fittings

ASTM F 1498 : PVC Schedule 40 Taper Threads

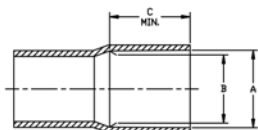
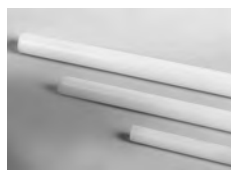
ASTM D 2672 : PVC Schedule 40 Tapered Sockets for Bell End Pipe

ANSI B1.20.1 : PVC Schedule 40 NPT Threads

Schedule 40 PVC

Pressure Pipe

PVC Pressure Pipe - 20 ft. lengths



Size [inch]	Plain End (P/L 45) Part No.	USD/ft	Bell End (P/L 47) Part No.	USD/ft
1/2	4004-005AB *	Call	4004-005BB *	Call
3/4	4004-007AB *	Call	4004-007BB *	Call
1	4004-010AB *	Call	4004-010BB *	Call
1 1/4	4004-012AB *	Call	4004-012BB *	Call
1 1/2	4004-015AB *	Call	4004-015BB *	Call
2	4004-020AB *	Call	4004-020BB *	Call
2 1/2	4004-025AB *	Call	4004-025BB *	Call
3	4004-030AB *	Call	4004-030BB *	Call
4	4004-040AB *	Call	4004-040BB *	Call
6	4004-060AB *	Call	4004-060BB *	Call
8	4004-080AB *	Call	4004-080BB *	Call
10	4004-100AB *	Call	4004-100BB *	Call
12	4004-120AB *	Call	4004-120BB *	Call
14	4004-140AB *	Call	4004-140BB *	Call
16	4004-160AB *	Call	4004-160BB *	Call

Size [inch]	Lift Qty [ft]	Average O.D. [inch]	min. wall [inch]	psi at 73° F	A - Socket Entrance (Belled Pipe)	B - Socket Bottom (Belled Pipe)	C - Minimum (Belled Pipe)
1/2	5600	0.840	0.109	600	0.848±0.004	0.836±0.004	1.000
3/4	5000	1.050	0.113	480	1.058±0.004	1.046±0.004	1.250
1	2360	1.315	0.133	450	1.325±0.005	1.310±0.005	1.500
1 1/4	1960	1.660	0.140	370	1.670±0.005	1.655±0.005	1.750
1 1/2	1800	1.900	0.145	330	1.912±0.006	1.894±0.006	2.000
2	1060	2.375	0.154	280	2.387±0.006	2.363±0.006	2.250
2 1/2	880	2.875	0.203	300	2.889±0.007	2.861±0.007	2.500
3	700	3.500	0.216	260	3.516±0.008	3.484±0.008	3.250
4	520	4.500	0.237	220	4.518±0.009	4.482±0.009	4.000
6	220	6.625	0.280	180	6.647±0.011	6.603±0.011	6.000
8	100	8.625	0.322	160	8.655±0.015	8.598±0.015	6.000
10	80	10.750	0.365	140	10.776±0.015	10.722±0.015	7.500
12	60	12.750	0.406	130	12.778±0.015	12.721±0.015	8.500
14	60	14.000	0.438	130	14.035±0.015	13.985±0.015	9.000
16	60	16.000	0.500	130	16.045±0.015	15.980±0.015	10.000

^ = 40% Restock Charge

* = Non-Cancelable/Non-Returnable

+GF+

Schedule 40 PVC

Pressure Fittings

Tee (S x S x S)



Size	P/L	Part No.	USD	Minimum Order Qty
½	01	401-005	0.67	50
¾	01	401-007	0.77	50
1	01	401-010	1.44	50
1 ¼	01	401-012	2.26	25
1 ½	01	401-015	2.74	25
2	01	401-020	3.99	25
2 ½	01	401-025	13.16	10
3	01	401-030	17.29	10
4	01	401-040	31.27	5
6	01	401-060	105.23	4
8	01	401-080	244.07	2
10	02	401-100	808.71	1
12	02	401-120	1194.91	1
14	04	401-140H *	1251.21	1
16	04	401-160H *	1811.20	1

^ = 40% Restock Charge
 * = Non-Cancelable/Non-Returnable

Schedule 40 PVC

Reducing Tee (S x S x S)



Size [inch]	P/L	Part No.	USD	Minimum Order Qty
3/4 x 1/2 x 1/2	01	401-094	1.30	50
3/4 x 1/2 x 3/4	01	401-095	1.30	50
3/4 x 3/4 x 1/2	01	401-101	0.89	50
3/4 x 3/4 x 1	01	401-102	2.56	50
1 x 1/2 x 1	01	401-122	2.56	50
1 x 3/4 x 3/4	01	401-125	2.56	50
1 x 3/4 x 1	01	401-126	2.56	50
1 x 1 x 1/2	01	401-130	1.52	50
1 x 1 x 3/4	01	401-131	1.66	50
1 x 1 x 1 1/4	01	401-132	3.42	50
1 x 1 x 1 1/2	01	401-133	3.99	25
1 1/4 x 1 x 3/4	01	401-157	3.49	25
1 1/4 x 1 x 1	01	401-158	3.49	25
1 1/4 x 1 1/4 x 1/2	01	401-166	2.47	25
1 1/4 x 1 1/4 x 3/4	01	401-167	2.47	25
1 1/4 x 1 1/4 x 1	01	401-168	2.47	25
1 1/2 x 1 1/2 x 1/2	01	401-209	4.34	25
1 1/2 x 1 1/2 x 3/4	01	401-210	4.34	25
1 1/2 x 1 1/2 x 1	01	401-211	4.34	25
1 1/2 x 1 1/2 x 1 1/4	01	401-212	4.34	25
2 x 1 1/2 x 3/4	01	401-238	6.20	10
2 x 1 1/2 x 1	01	401-239	6.20	10
2 x 2 x 1/2	01	401-247	4.27	10
2 x 2 x 3/4	01	401-248	4.27	10
2 x 2 x 1	01	401-249	4.27	10
2 x 2 x 1 1/4	01	401-250	4.27	10
2 x 2 x 1 1/2	01	401-251	4.27	10
2 1/2 x 2 1/2 x 3/4	01	401-288	13.13	10
2 1/2 x 2 1/2 x 1	01	401-289	13.13	10
2 1/2 x 2 1/2 x 1 1/4	01	401-290	13.13	10
2 1/2 x 2 1/2 x 1 1/2	01	401-291	13.13	10
2 1/2 x 2 1/2 x 2	01	401-292	13.13	10
3 x 3 x 3/4	01	401-334	18.80	10
3 x 3 x 1	01	401-335	18.80	10
3 x 3 x 1 1/4	01	401-336	18.80	10
3 x 3 x 1 1/2	01	401-337	18.80	10
3 x 3 x 2	01	401-338	18.77	10
4 x 4 x 3/4	01	401-416	31.27	4
4 x 4 x 1	01	401-417	31.27	4
4 x 4 x 1 1/4	01	401-418	31.27	5
4 x 4 x 1 1/2	01	401-419	31.27	5
4 x 4 x 2	01	401-420	31.27	5
4 x 4 x 3	01	401-422	31.27	5
6 x 6 x 3	01	401-530	105.23	5
6 x 6 x 4	01	401-532	105.23	5
8 x 8 x 4	01	401-582	244.07	2
8 x 8 x 6	01	401-585	244.07	2
10 x 10 x 2	04	401-619H *	453.27	1
10 x 10 x 3	04	401-621H *	486.18	1
10 x 10 x 4	04	401-623H *	503.64	1
10 x 10 x 6	04	401-626H *	569.56	1
10 x 10 x 8	02	401-628FB *	638.97	1
12 x 12 x 2	04	401-659H *	586.12	1
12 x 12 x 3	04	401-661H *	631.32	1
12 x 12 x 4	04	401-663H *	669.77	1
12 x 12 x 6	04	401-666H *	712.41	1

^ = 40% Restock Charge

* = Non-Cancelable/Non-Returnable

+GF+

Schedule 40 PVC

Size [inch]	P/L	Part No.	USD	Minimum Order Qty
12 x 12 x 8	04	401-668H *	793.48	1
12 x 12 x 10	02	401-670FB *	881.67	1
14 x 14 x 2	04	401-692H *	734.41	1
14 x 14 x 3	04	401-694H *	800.12	1
14 x 14 x 4	04	401-696H *	850.92	1
14 x 14 x 6	04	401-698H *	901.71	1
14 x 14 x 8	04	401-700H *	950.25	1
14 x 14 x 10	04	401-702H *	1112.17	1
14 x 14 x 12	04	401-704H *	1263.30	1
16 x 16 x 2	04	401-726H *	924.92	1
16 x 16 x 3	04	401-728H *	993.75	1
16 x 16 x 4	04	401-730H *	844.33	1
16 x 16 x 6	04	401-732H *	912.73	1
16 x 16 x 8	04	401-734H *	1069.77	1
16 x 16 x 10	04	401-736H *	1325.02	1
16 x 16 x 12	04	401-738H *	1526.16	1
16 x 16 x 14	04	401-740H *	1782.13	1



Tee (S x S X FPT)

Size [inch]	P/L	Part No.	USD	Minimum Order Qty
½	01	402-005	0.89	50
¾	01	402-007	1.39	50
1	01	402-010	2.56	50
1 ¼	01	402-012	4.07	25
1 ½	01	402-015	5.29	25
2	01	402-020	6.71	10
3	01	402-030	26.01	10
4	01	402-040	39.76	5

^ = 40% Restock Charge
 * = Non-Cancelable/Non-Returnable

Schedule 40 PVC

Reducing Tee (S x S x FPT)



Size [inch]	P/L	Part No.	USD	Minimum Order Qty
3/4 x 3/4 x 1/2	01	402-101	1.18	50
1 x 1 x 1/2	01	402-130	1.80	50
1 x 1 x 3/4	01	402-131	2.56	50
1 1/4 x 1 1/4 x 1	01	402-168	4.27	25
1 1/4 x 1 1/4 x 3/4	01	402-167	4.27	25
1 1/2 x 1 1/2 x 1/2	01	402-209	5.29	25
1 1/2 x 1 1/2 x 3/4	01	402-210	5.29	25
1 1/2 x 1 1/2 x 1	01	402-211	5.29	25
1 1/2 x 1 1/2 x 1 1/4	01	402-212	5.29	25
2 x 2 x 1/2	01	402-247	6.66	10
2 x 2 x 3/4	01	402-248	6.66	10
2 x 2 x 1	01	402-249	6.66	10
2 x 2 x 1 1/4	01	402-250	6.66	10
2 x 2 x 1 1/2	01	402-251	6.66	10
2 1/2 x 2 1/2 x 1 1/2	01	402-291	14.42	10
2 1/2 x 2 1/2 x 2	01	402-292	14.42	10
3 x 3 x 1 1/2	01	402-337	20.61	10
3 x 3 x 2	01	402-338	20.61	10
4 x 4 x 1 1/2	01	402-419	34.42	5
4 x 4 x 2	01	402-420	34.42	5
4 x 4 x 3	01	402-422	34.42	5
6 x 6 x 3	01	402-530	116.68	5
6 x 6 x 4	01	402-532	116.68	5
10 x 10 x 2	04	402-619H *	467.67	1
10 x 10 x 3	04	402-621H *	500.67	1
10 x 10 x 4	04	402-623H *	542.93	1
12 x 12 x 2	04	402-659H *	600.66	1
12 x 12 x 3	04	402-661H *	647.14	1
12 x 12 x 4	04	402-663H *	700.63	1

Tee (FPT x FPT x FPT)



Size [inch]	P/L	Part No.	USD	Minimum Order Qty
1/2	01	405-005	2.46	50
3/4	01	405-007	3.87	50
1	01	405-010	5.37	50
1 1/4	01	405-012	7.42	25
1 1/2	01	405-015	7.64	25

^ = 40% Restock Charge

* = Non-Cancelable/Non-Returnable

+GF+

Schedule 40 PVC

90° EII (S x S)



Size [inch]	P/L	Part No.	USD	Minimum Order Qty
½	01	406-005	0.54	50
¾	01	406-007	0.61	50
1	01	406-010	1.09	50
1 ¼	01	406-012	1.93	25
1 ½	01	406-015	2.06	25
2	01	406-020	3.23	25
2 ½	01	406-025	9.84	10
3	01	406-030	11.78	10
4	01	406-040	21.07	5
6	01	406-060	66.97	4
8	01	406-080	172.48	3
10	02	406-100	649.64	1
12	02	406-120	871.30	1
14	04	406-140H *	778.02	1
16	04	406-160H *	1113.32	1

Reducing 90° EII (S x S)



Size [inch]	P/L	Part No.	USD	Minimum Order Qty
¾ x ½	01	406-101	1.09	50
1 x ½	01	406-130	1.61	50
1 x ¾	01	406-131	1.94	50

90° EII (S x FPT)



Size [inch]	P/L	Part No.	USD	Minimum Order Qty
½	01	407-005	0.67	50
¾	01	407-007	0.77	50
1	01	407-010	1.44	50
1 ¼	01	407-012	2.42	25
1 ½	01	407-015	2.68	25
2	01	407-020	6.92	10
2 ½	01	407-025	17.10	10
3	01	407-030	25.62	10
4	01	407-040	38.84	5

Reducing 90° EII (S x FPT)



Size [inch]	P/L	Part No.	USD	Minimum Order Qty
¾ x ½	01	407-101	0.80	50
1 x ½	01	407-130	2.22	50
1 x ¾	01	407-131	2.22	50
1 ¼ x 1	01	407-168	3.23	25
1 ½ x 1	01	407-211	5.38	25
1 ½ x 1 ¼	01	407-212	5.58	25
2 x 1	01	407-249	9.29	25
2 x 1 ¼	01	407-250	9.29	10
2 x 1 ½	01	407-251	9.29	10

^ = 40% Restock Charge

* = Non-Cancelable/Non-Returnable

Schedule 40 PVC

90° EII (FPT x FPT)



Size [inch]	P/L	Part No.	USD	Minimum Order Qty
½	01	408-005 ^	1.30	50
¾	01	408-007 ^	1.94	50
1	01	408-010 ^	4.12	50
1 ¼	01	408-012 ^	4.41	25
1 ½	01	408-015 ^	5.58	25
2	01	408-020 ^	8.46	10

90° Street EII (S x Spg)



Size [inch]	P/L	Part No.	USD	Minimum Order Qty
½	01	409-005	1.52	50
¾	01	409-007	1.87	50
1	01	409-010	3.23	50
1 ¼	01	409-012	3.87	25
1 ½	01	409-015	4.27	25
2	01	409-020	8.23	10
2 ½	01	409-025	14.77	10
3	01	409-030	18.23	10

90° Street EII (MPT x S)



Size	P/L	Part No.	USD	Minimum Order Qty
½	01	410-005 ^	1.18	50
¾	01	410-007 ^	1.39	50
1	01	410-010 ^	2.31	50
1 ¼	01	410-012 ^	3.23	25
1 ½	01	410-015 ^	3.38	25
2	01	410-020 ^	8.32	10

90° Street EII (MPT x FPT)



Size [inch]	P/L	Part No.	USD	Minimum Order Qty
½	01	412-005 ^	1.59	50
¾	01	412-007 ^	1.94	50
1	01	412-010 ^	3.31	50
1 ¼	01	412-012 ^	4.12	25
1 ½	01	412-015 ^	4.47	25

^ = 40% Restock Charge

* = Non-Cancelable/Non-Returnable

+GF+

Schedule 40 PVC

Side Outlet Elbow (S x S x S)



Size [inch]	P/L	Part No.	USD	Minimum Order Qty
½	01	413-005 ^	2.93	50
¾	01	413-007 ^	3.99	50
1	01	413-010 ^	5.10	25
1 ½	01	413-015 ^	5.60	25
2	01	413-020 ^	7.77	10

45° Ell (S x S)



Size [inch]	P/L	Part No.	USD	Minimum Order Qty
½	01	417-005	0.89	50
¾	01	417-007	1.39	50
1	01	417-010	1.66	50
1 ¼	01	417-012	2.31	25
1 ½	01	417-015	2.90	25
2	01	417-020	3.78	25
2 ½	01	417-025	9.86	10
3	01	417-030	15.30	10
4	01	417-040	27.44	5
6	01	417-060	67.79	4
8	01	417-080	163.03	4
10	02	417-100	424.49	1
12	02	417-120	628.99	1
14	04	417-140H *	516.82	1
16	04	417-160H *	683.04	1

Cross (S x S x S x S)



Size [inch]	P/L	Part No.	USD	Minimum Order Qty
½	01	420-005 ^	2.06	50
¾	01	420-007 ^	3.43	50
1	01	420-010 ^	4.27	50
1 ¼	01	420-012 ^	5.64	25
1 ½	01	420-015 ^	6.39	25
2	01	420-020 ^	9.43	10
2 ½	01	420-025 ^	19.99	8
3	01	420-030 ^	24.51	10
4	01	420-040 ^	36.33	5
10	04	420-100H *	760.15	1
12	04	420-120H *	1071.23	1
14	04	420-140H *	1904.84	1
16	04	420-160H *	2414.80	1

^ = 40% Restock Charge
* = Non-Cancelable/Non-Returnable

Schedule 40 PVC

Reducing Cross (S x S x S x S)



Size [inch]	P/L	Part No.	USD	Minimum Order Qty
3 x 1 1/2	01	420-337 ^	21.42	10
3 x 2	01	420-338 ^	21.42	10
4 x 1 1/2	01	420-419 ^	35.81	5
4 x 2	01	420-420 ^	35.81	5
10 x 2	04	420-619H *	533.35	1
10 x 3	04	420-621H *	574.91	1
10 x 4	04	420-623H *	595.77	1
10 x 6	04	420-626H *	638.61	1
10 x 8	04	420-628H *	678.53	1
12 x 2	04	420-659H *	599.50	1
12 x 3	04	420-661H *	643.35	1
12 x 4	04	420-663H *	673.95	1
12 x 6	04	420-666H *	708.78	1
12 x 8	04	420-668H *	764.65	1
12 x 10	04	420-670H *	871.35	1
14 x 2	04	420-692H *	828.73	1
14 x 3	04	420-694H *	888.45	1
14 x 4	04	420-696H *	907.74	1
14 x 6	04	420-698H *	1065.32	1
14 x 8	04	420-700H *	1186.27	1
14 x 10	04	420-702H *	1348.25	1
14 x 12	04	420-704H *	1531.47	1
16 x 2	04	420-726H *	1012.71	1
16 x 3	04	420-728H *	1089.22	1
16 x 4	04	420-730H *	1125.71	1
16 x 6	04	420-732H *	1217.66	1
16 x 8	04	420-734H *	1426.32	1
16 x 10	04	420-736H *	1537.13	1
16 x 12	04	420-738H *	1734.60	1
16 x 14	04	420-740H *	1919.27	1



Coupling (S x S)

Size [inch]	P/L	Part No.	USD	Minimum Order Qty
1/2	01	429-005	0.36	100
3/4	01	429-007	0.49	50
1	01	429-010	0.86	50
1 1/4	01	429-012	1.18	25
1 1/2	01	429-015	1.26	25
2	01	429-020	1.94	25
2 1/2	01	429-025	4.27	10
3	01	429-030	6.68	10
4	01	429-040	9.66	5
6	01	429-060	30.56	5
8	01	429-080	57.07	4
10	04	429-100 *	166.30	1
12	04	429-120 *	267.40	1
14	04	429-140H *	171.45	1
16	04	429-160H *	191.22	1

^ = 40% Restock Charge

* = Non-Cancelable/Non-Returnable

+GF+

Schedule 40 PVC

Reducing Coupling (S x S)



Size [inch]	P/L	Part No.	USD	Minimum Order Qty
¾ x ½	01	429-101	0.89	50
1 x ¾	01	429-131	1.52	50
1 ¼ x 1	01	429-168	2.56	25
1 ½ x 1 ¼	01	429-212	2.72	25
2 x 1 ½	01	429-251	4.31	10
3 x 2	01	429-338	23.18	5
4 x 3	01	429-422	28.96	4
6 x 4	01	429-532	38.22	4
8 x 4	01	429-582	88.64	4
8 x 6	01	429-585	97.89	4
10 x 4	04	429-623H *	345.15	1
10 x 6	04	429-626H *	267.78	1
10 x 8	04	429-628H *	110.52	1
12 x 8	04	429-668H *	294.56	1
12 x 10	04	429-670H *	160.90	1
14 x 10	04	429-702H *	498.08	1
14 x 12	04	429-704H *	269.48	1
16 x 12	04	429-738H *	482.03	1
16 x 14	04	429-740H *	323.43	1

Coupling (FPT x FPT)



Size [inch]	P/L	Part No.	USD	Minimum Order Qty
½	01	430-005 ^	0.68	100
¾	01	430-007 ^	1.26	50
1	01	430-010 ^	1.66	50

Female Adapter (S x FPT)



Size [inch]	P/L	Part No.	USD	Minimum Order Qty
½	01	435-005	0.61	100
¾	01	435-007	0.77	50
1	01	435-010	0.89	50
1 ¼	01	435-012	1.39	25
1 ½	01	435-015	1.59	25
2	01	435-020	2.12	25
2 ½	01	435-025	5.38	10
3	01	435-030	7.22	10
4	01	435-040	11.97	5
6	01	435-060	44.02	4
8	01	435-080	83.00	4

^ = 40% Restock Charge
* = Non-Cancelable/Non-Returnable

Schedule 40 PVC

Reducing Female Adapter (S x FPT)



Size [inch]	P/L	Part No.	USD	Minimum Order Qty
3/4 x 1/2	01	435-101	1.09	50
3/4 x 1	01	435-102	1.44	50
1 x 3/4	01	435-131	1.44	50

Male Adapter (S x MPT)



Size [inch]	P/L	Part No.	USD	Minimum Order Qty
1/2	01	436-005	0.49	100
3/4	01	436-007	0.54	50
1	01	436-010	0.97	50
1 1/4	01	436-012	1.18	25
1 1/2	01	436-015	1.59	25
2	01	436-020	2.08	25
2 1/2	01	436-025	6.13	10
3	01	436-030	8.96	10
4	01	436-040	11.42	5
6	01	436-060	29.79	4
8	01	436-080	135.38	4

Reducing Male Adapter (S x MPT)



Size [inch]	P/L	Part No.	USD	Minimum Order Qty
3/4 x 1/2	01	436-074	0.97	50
1/2 x 3/4	01	436-101	0.89	50
1 x 3/4	01	436-102	1.39	50
3/4 x 1	01	436-131	2.96	50
1 1/4 x 1	01	436-132	3.23	25
1 x 1 1/4	01	436-168	3.64	25
1 1/2 x 1 1/4	01	436-169	3.64	25
1 1/4 x 1 1/2	01	436-212	4.40	25
2 x 1 1/2	01	436-213	4.40	10
1 1/2 x 2	01	436-251	5.02	10

^ = 40% Restock Charge

* = Non-Cancelable/Non-Returnable

+GF+

Schedule 40 PVC

Reducer Bushing (Spg x S)

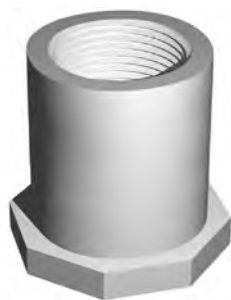


Size [inch]	P/L	Part No.	USD	Minimum Order Qty
3/4 x 1/2	01	437-101	0.56	100
1 x 1/2	01	437-130	1.03	100
1 x 3/4	01	437-131	1.03	100
1 1/4 x 1/2	01	437-166	1.39	25
1 1/4 x 3/4	01	437-167	1.39	25
1 1/4 x 1	01	437-168	1.39	25
1 1/2 x 1/2	01	437-209	1.46	25
1 1/2 x 3/4	01	437-210	1.46	25
1 1/2 x 1	01	437-211	1.46	25
1 1/2 x 1 1/4	01	437-212	1.46	25
2 x 1/2	01	437-247	2.42	10
2 x 3/4	01	437-248	2.42	10
2 x 1	01	437-249	2.42	10
2 x 1 1/4	01	437-250	2.42	10
2 x 1 1/2	01	437-251	2.42	25
2 1/2 x 1	01	437-289	3.88	10
2 1/2 x 1 1/4	01	437-290	3.88	10
2 1/2 x 1 1/2	01	437-291	3.88	10
2 1/2 x 2	01	437-292	3.88	10
3 x 1	01	437-335	5.72	10
3 x 1 1/4	01	437-336	5.72	10
3 x 1 1/2	01	437-337	5.72	10
3 x 2	01	437-338	5.72	10
3 x 2 1/2	01	437-339	5.72	10
4 x 2	01	437-420	12.78	5
4 x 2 1/2	01	437-421	12.78	5
4 x 3	01	437-422	12.78	5
6 x 3	01	437-530	31.64	5
6 x 4	01	437-532	31.64	5
8 x 4	01	437-582	110.38	5
8 x 6	01	437-585	110.38	5
10 x 4	04	437-623H *	428.46	1
10 x 6	04	437-626H *	267.82	1
10 x 8	02	437-628	300.42	1
12 x 6	04	437-666H *	696.25	1
12 x 8	04	437-668H *	302.70	1
12 x 10	02	437-670	334.10	1
14 x 8	04	437-700H *	814.10	1
14 x 10	04	437-702H *	653.41	1
14 x 12	04	437-704H *	332.06	1
16 x 10	04	437-736H *	1103.31	1
16 x 12	04	437-738H *	794.56	1
16 x 14	04	437-740H *	460.60	1

^ = 40% Restock Charge
* = Non-Cancelable/Non-Returnable

Schedule 40 PVC

Reducer Bushing (Spg x FPT)



Size [inch]	P/L	Part No.	USD	Minimum Order Qty
1/2 x 1/4	01	438-072	1.18	100
1/2 x 3/8	01	438-073	1.18	100
3/4 x 1/4	01	438-098	1.18	100
3/4 x 1/2	01	438-101	0.89	100
1 x 1/2	01	438-130	1.44	100
1 x 3/4	01	438-131	1.44	100
1 1/4 x 1/2	01	438-166	2.22	25
1 1/4 x 3/4	01	438-167	2.22	25
1 1/4 x 1	01	438-168	2.22	25
1 1/2 x 1/2	01	438-209	2.56	25
1 1/2 x 3/4	01	438-210	2.56	25
1 1/2 x 1	01	438-211	2.56	25
1 1/2 x 1 1/4	01	438-212	2.56	25
2 x 1/2	01	438-247	3.43	10
2 x 3/4	01	438-248	3.43	10
2 x 1	01	438-249	3.43	10
2 x 1 1/4	01	438-250	3.43	10
2 x 1 1/2	01	438-251	3.43	10
2 1/2 x 1 1/4	01	438-291	4.96	10
2 1/2 x 2	01	438-292	4.96	10
3 x 1 1/2	01	438-337	5.72	10
3 x 2	01	438-338	5.72	10
3 x 2 1/2	01	438-339	5.72	10
4 x 2	01	438-420	12.76	5
4 x 2 1/2	01	438-421	12.76	5
4 x 3	01	438-422	12.76	5
6 x 4	01	438-532	46.71	5
10 x 6	04	438-626H *	267.82	1
10 x 8	04	438-628H *	267.82	1
12 x 8	04	438-668H *	297.84	1
12 x 10	04	438-670H *	297.84	1



Reducer Bushing (MPT x FPT)

Size [inch]	P/L	Part No.	USD	Minimum Order Qty
1/2 x 1/4	01	439-072	2.56	50
1/2 x 3/8	01	439-073 ^	2.56	50
3/4 x 1/4	01	439-098 ^	1.59	50
3/4 x 1/2	01	439-101 ^	1.59	50
1 x 1/2	01	439-130 ^	2.22	50
1 x 3/4	01	439-131 ^	2.22	50
1 1/4 x 1/2	01	439-166 ^	3.30	25
1 1/4 x 3/4	01	439-167 ^	3.30	25
1 1/4 x 1	01	439-168 ^	3.30	25
1 1/2 x 1/2	01	439-209 ^	3.99	25
1 1/2 x 3/4	01	439-210 ^	3.99	25
1 1/2 x 1	01	439-211 ^	3.99	25
1 1/2 x 1 1/4	01	439-212 ^	3.99	25
2 x 1	01	439-249 ^	4.27	10
2 x 1 1/4	01	439-250 ^	4.27	10
2 x 1 1/2	01	439-251 ^	4.27	10
2 1/2 x 2	01	439-292 ^	14.92	10
3 x 2	01	439-338 ^	17.64	5

^ = 40% Restock Charge

* = Non-Cancelable/Non-Returnable

+GF+

Schedule 40 PVC

Cap (S)



Size [inch]	P/L	Part No.	USD	Minimum Order Qty
½	01	447-005	0.49	100
¾	01	447-007	0.56	100
1	01	447-010	0.89	50
1 ¼	01	447-012	1.26	25
1 ½	01	447-015	1.39	25
2	01	447-020	1.66	25
2 ½	01	447-025	5.29	10
3	01	447-030	5.79	10
4	01	447-040	13.16	5
6	01	447-060	31.54	5
8	01	447-080	79.22	4
10	02	447-100	300.04	1
12	02	447-120	335.14	1
14	04	447-140H *	416.67	1
16	04	447-160H *	535.58	1

Cap (FPT)



Size [inch]	P/L	Part No.	USD	Minimum Order Qty
½	01	448-005 ^	1.03	100
¾	01	448-007 ^	1.18	100
1	01	448-010 ^	1.80	50
1 ¼	01	448-012 ^	2.12	25
1 ½	01	448-015 ^	2.22	25
2	01	448-020 ^	3.92	10
2 ½	01	448-025 ^	5.79	10
3	01	448-030 ^	7.57	10
4	01	448-040 ^	13.28	5
6	01	448-060 ^	31.16	5

Plug (Spg)



Size [inch]	P/L	Part No.	USD	Minimum Order Qty
½	01	449-005	1.18	50
¾	01	449-007	1.39	50
1	01	449-010	1.66	50
1 ¼	01	449-012	2.22	25
1 ½	01	449-015	2.82	25
2	01	449-020	3.50	10
2 ½	01	449-025	5.97	10
3	01	449-030	7.90	10
4	01	449-040	17.89	5

^ = 40% Restock Charge
* = Non-Cancelable/Non-Returnable

Schedule 40 PVC

Plug (MPT)



Size [inch]	P/L	Part No.	USD	Minimum Order Qty
½	01	450-005	1.46	50
¾	01	450-007	1.57	50
1	01	450-010	2.56	50
1 ¼	01	450-012	2.69	25
1 ½	01	450-015	2.89	25
2	01	450-020	3.72	10
2 ½	01	450-025	5.18	10
3	01	450-030	7.84	10
4	01	450-040	17.69	5

Union (S x S)



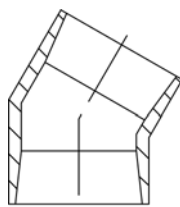
Size [inch]	P/L	Part No.	USD	Minimum Order Qty
½	01	457-005	5.29	10
¾	01	457-007	6.02	10
1	01	457-010	6.20	10
1 ¼	01	457-012	19.98	5
1 ½	01	457-015	20.82	5
2	01	457-020	28.07	5

Union (FPT x FPT)



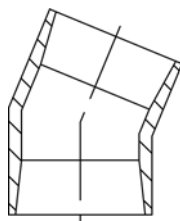
Size [inch]	P/L	Part No.	USD	Minimum Order Qty
½	01	458-005 ^	5.94	10
¾	01	458-007 ^	9.92	10
1	01	458-010 ^	13.52	10
1 ¼	01	458-012 ^	23.23	5
1 ½	01	458-015 ^	23.73	5
2	01	458-020 ^	29.16	5

30° EII (S x S)



Size [inch]	P/L	Part No.	USD
10	04	415-100H *	134.82
12	04	415-120H *	240.74
14	04	415-140H *	335.31
16	04	415-160H *	457.10

22 1/2° EII (S x S)



Size [inch]	P/L	Part No.	USD
10	04	416-100H *	134.82
12	04	416-120H *	213.28
14	04	416-140H *	335.31
16	04	416-160H *	457.10

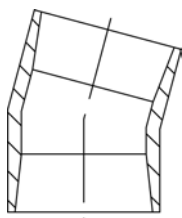
^ = 40% Restock Charge

* = Non-Cancelable/Non-Returnable

+GF+

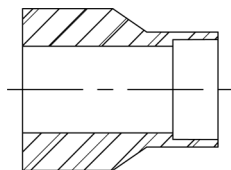
Schedule 40 PVC

15° Ell (S x S)



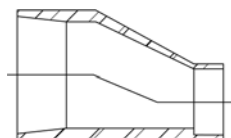
Size [inch]	P/L	Part No.	USD
10	04	418-100H *	134.82
12	04	418-120H *	213.28
14	04	418-140H *	335.31
16	04	418-160H *	457.10

Extended Style Reducer Bushing (Spq x S)



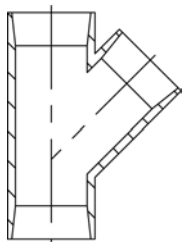
Size [inch]	P/L	Part No.	USD
10 x 6	04	440-626H *	294.56
10 x 8	04	440-628H *	149.96
12 x 6	04	440-666H *	511.18
12 x 8	04	440-668H *	345.15
12 x 10	04	440-670H *	192.81
14 x 8	04	440-700H *	678.88
14 x 10	04	440-702H *	529.45
14 x 12	04	440-704H *	333.37
16 x 10	04	440-736H *	1071.16
16 x 12	04	440-738H *	856.93
16 x 14	04	440-740H *	524.86

Eccentric Reducer (S x S)



Size [inch]	P/L	Part No.	USD
10 x 4	04	441-623H *	1008.08
10 x 6	04	441-626H *	945.12
10 x 8	04	441-628H *	913.65
12 x 4	04	441-663H *	1417.72
12 x 6	04	441-666H *	1386.22
12 x 8	04	441-668H *	1323.20
12 x 10	04	441-670H *	1236.55

45° Wye (S x S x S)

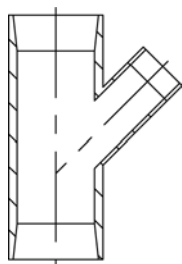


Size [inch]	P/L	Part No.	USD
10	04	475-100H *	851.17
12	04	475-120H *	1172.18
14	04	475-140H *	1660.67
16	04	475-160H *	2146.63

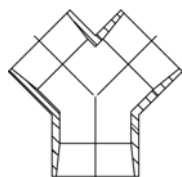
^ = 40% Restock Charge
 * = Non-Cancelable/Non-Returnable

Schedule 40 PVC

45° Reducing Wye (S x S x S)



Size [inch]	P/L	Part No.	USD
10 x 2	04	475-619H *	511.77
10 x 3	04	475-621H *	548.37
10 x 4	04	475-623H *	580.31
10 x 6	04	475-626H *	640.74
10 x 8	04	475-628H *	685.62
12 x 2	04	475-659H *	583.91
12 x 3	04	475-661H *	628.20
12 x 4	04	475-663H *	661.34
12 x 6	04	475-666H *	747.94
12 x 8	04	475-668H *	867.40
12 x 10	04	475-670H *	991.76
14 x 2	04	475-692H *	825.83
14 x 3	04	475-694H *	893.82
14 x 4	04	475-696H *	937.38
14 x 6	04	475-698H *	1056.10
14 x 8	04	475-700H *	1210.12
14 x 10	04	475-702H *	1351.76
14 x 12	04	475-704H *	685.62
16 x 2	04	475-726H *	959.46
16 x 3	04	475-728H *	1037.18
16 x 4	04	475-730H *	1078.62
16 x 6	04	475-732H *	1213.77
16 x 8	04	475-734H *	1382.30
16 x 10	04	475-736H *	1538.47
16 x 12	04	475-738H *	1714.41
16 x 14	04	475-740H *	1940.46



True Wye (S x S x S)

Size [inch]	P/L	Part No.	USD
10	04	476-100H *	1130.61
12	04	476-120H *	1338.96
14	04	476-140H *	1725.87
16	04	476-160H *	2261.55

^ = 40% Restock Charge

* = Non-Cancelable/Non-Returnable

+GF+

George Fischer Piping Systems

PVC Pressure Piping System Specification Submittal Data Sheet Schedule 40 Pipe and Fittings

Pipe

Pipe will be manufactured to the dimensions and tolerances of ASTM D1785. Belled end pipe bells shall be manufactured to the dimensions and tolerances of ASTM D2672. The PVC material shall be Type I, Grade I with a cell classification of 12454-B and conform to ASTM D1784. The pipe will conform to NSF 14 & 61, and UPC® standards.

- PVC Sch.40 Type I, Group I Plain End Pipe - 20 ft. Lengths
- PVC Sch.40 Type I, Group I Belled End Pipe - 20 ft. Lengths

Fittings

Socket type molded fittings will be manufactured to the dimensions and tolerances of ASTM D2466. Threaded type (NPT) molded fittings will be manufactured to the dimensions and tolerances of ASTM D2466 and meet the requirements of ANSI/ASME B 1.20.1. The PVC material shall be Type I, Grade I with a cell classification of 12454-B and conform to ASTM D1784. The fittings will conform to NSF 14 & 61, and UPC® standards.

- PVC Sch.40 Type I, Grade I Socket Type
- PVC Sch.40 Type I, Grade I Threaded Type

Job Name: _____

Job Location: _____

Engineer: _____

Contractor: _____

Representative: _____



GEORG FISCHER
PIPING SYSTEMS